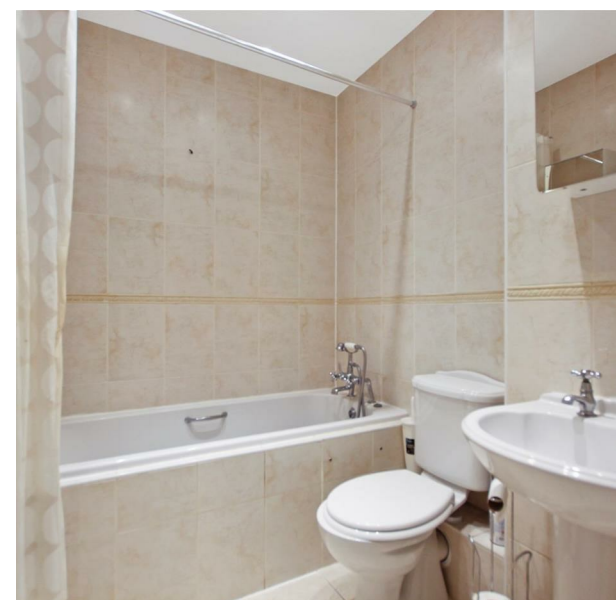


Flat 3 Maplewood Court 31 Eastbury Avenue, Northwood, HA6 3LL  
£2,500 Per month  
Council Tax Band: F



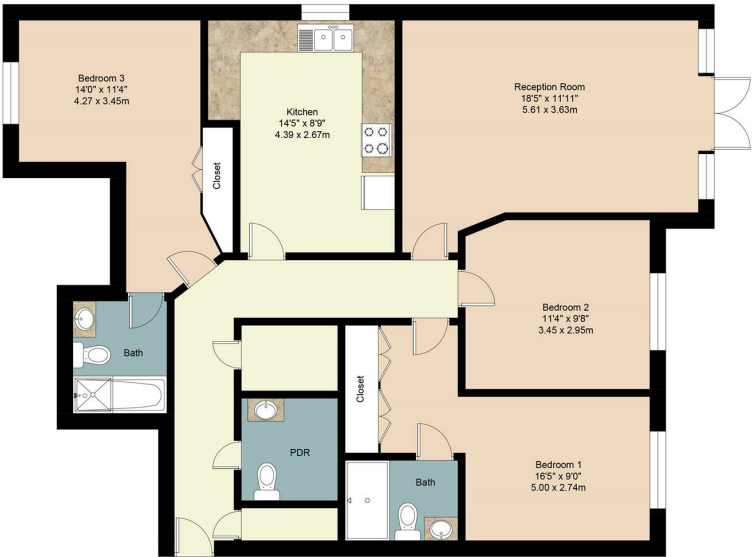
Enjoying a tranquil setting in one of the area's finest streets, this gated development apartment has been thoughtfully designed and appointed to create spacious and comfortable living.

The accommodation comprises of entrance hallway, a modern fitted kitchen/dining room, W/C, a spacious reception room with double doors opening out to a private balcony and three double bedrooms with two enjoining fitted wardrobes and high quality en-suites. To the rear of the property there are beautifully manicured communal gardens, very private and not overlooked.

This property further benefits from being within a mile of Northwood Town centre, Waitrose Supermarket, NATO HQ and for the commuter, Baker Street, The City and Central London are all easily accessible due to the Metropolitan Line station.



Flat 3 Maplewood Court 31 Eastbury Avenue  
Northwood  
HA6 3LL  
0208 004 0045  
admin@urbankeys.co.uk  
<https://urbankeys.co.uk/>



FLOOR PLAN  
Approximate Area :  
1155 sq ft /107.2 sq m



Energy Efficiency Rating		
	Current	Potential
Very energy efficient - lower running costs		
(92 plus) A		
(81-91) B		
(69-80) C		
(55-68) D	72	77
(39-54) E		
(21-38) F		
(1-20) G		
Not energy efficient - higher running costs		
England & Wales		
EU Directive 2002/91/EC		